

BLOCK 15

EAST HIGH SCHOOL

14-1039

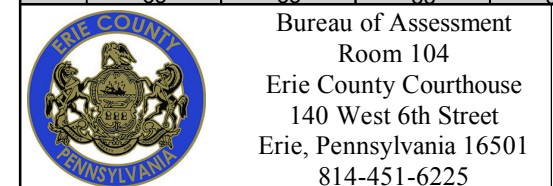
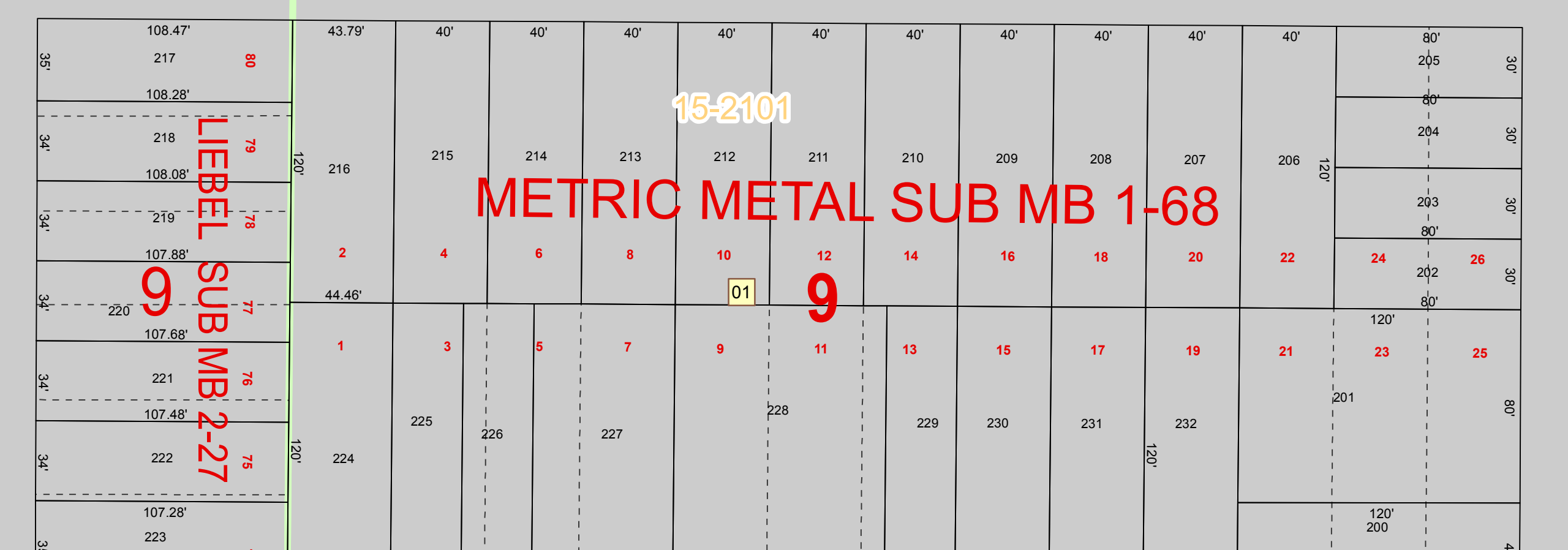
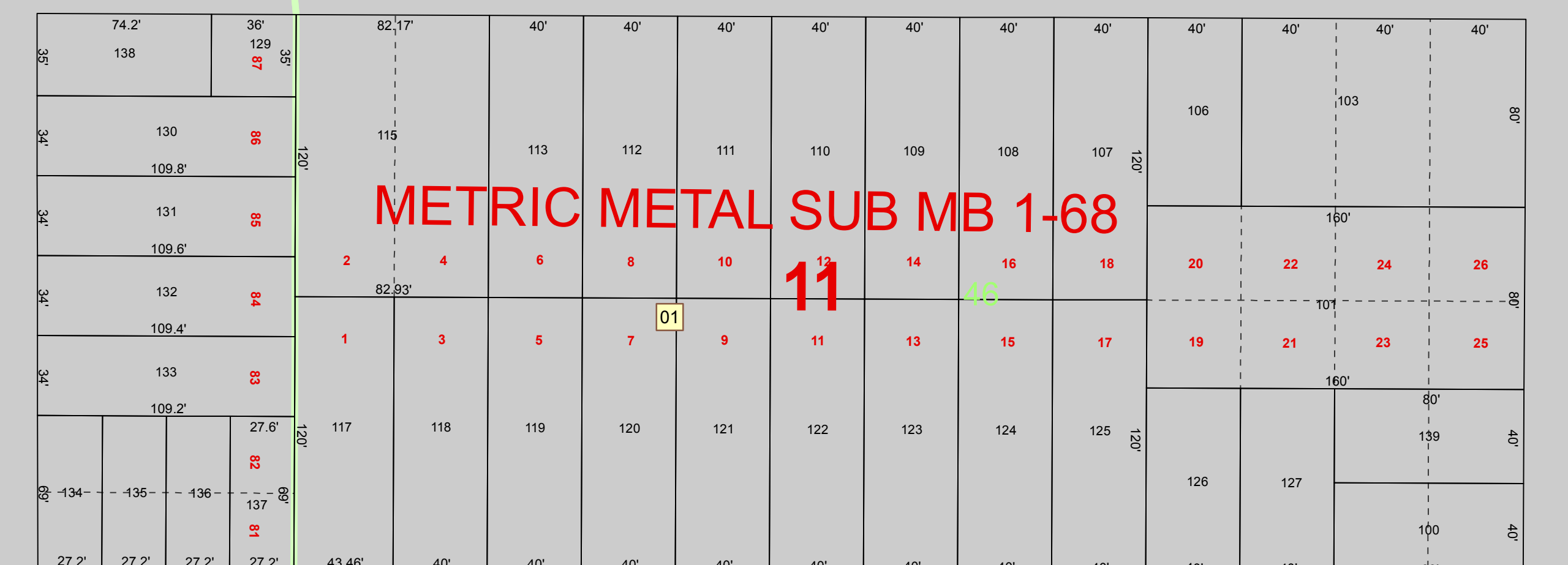
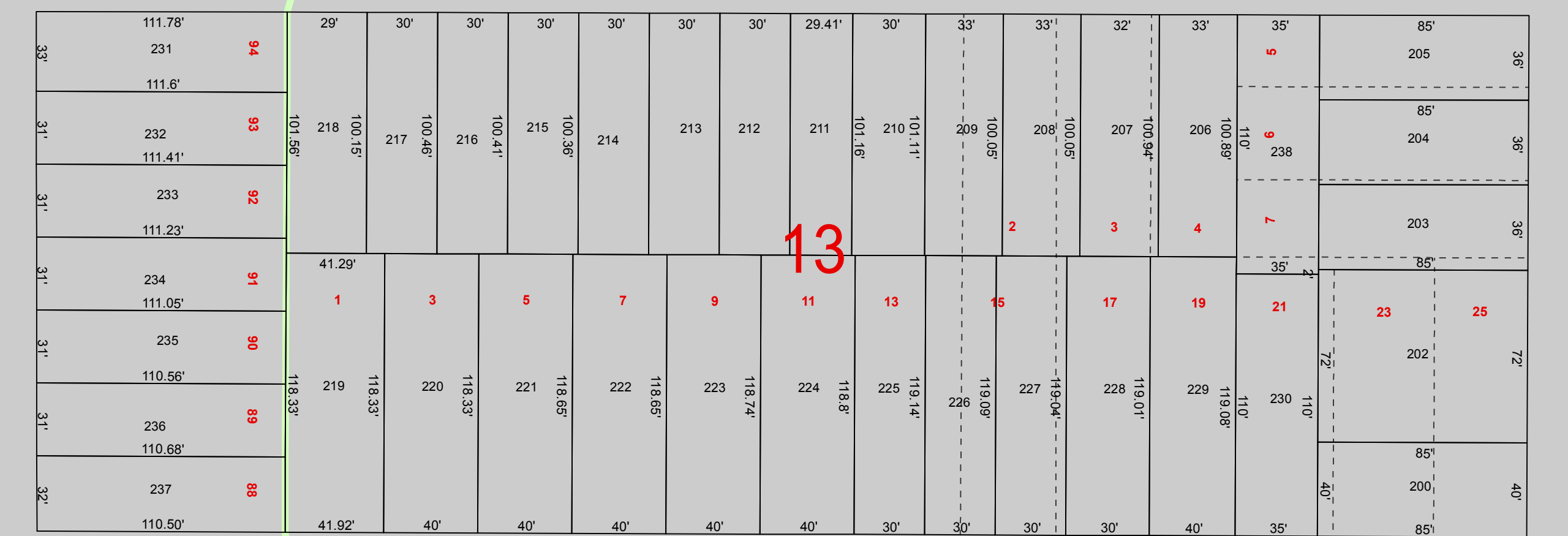
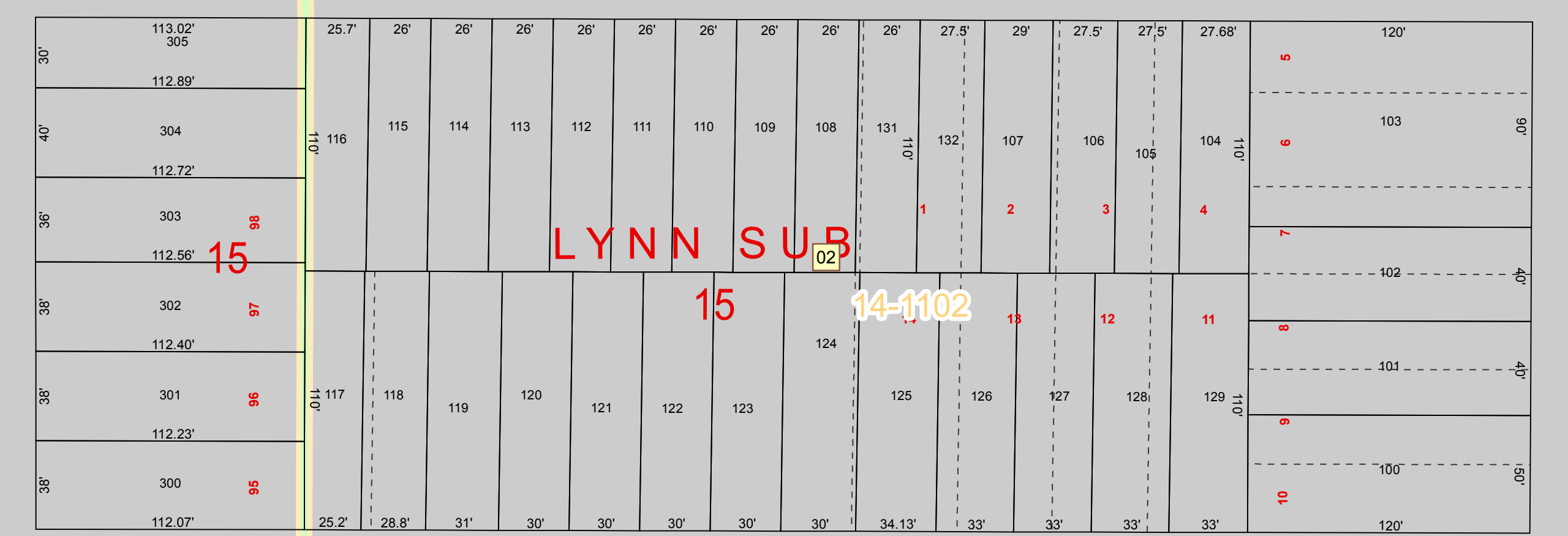
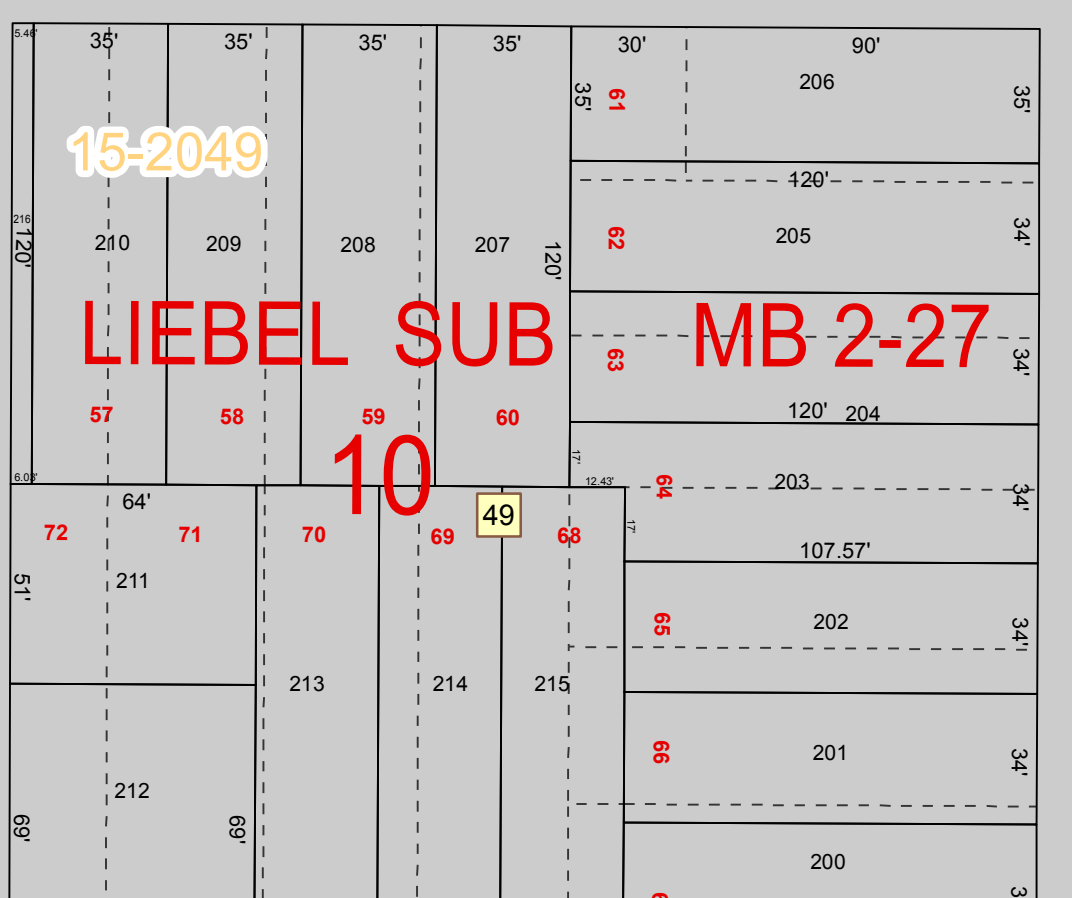
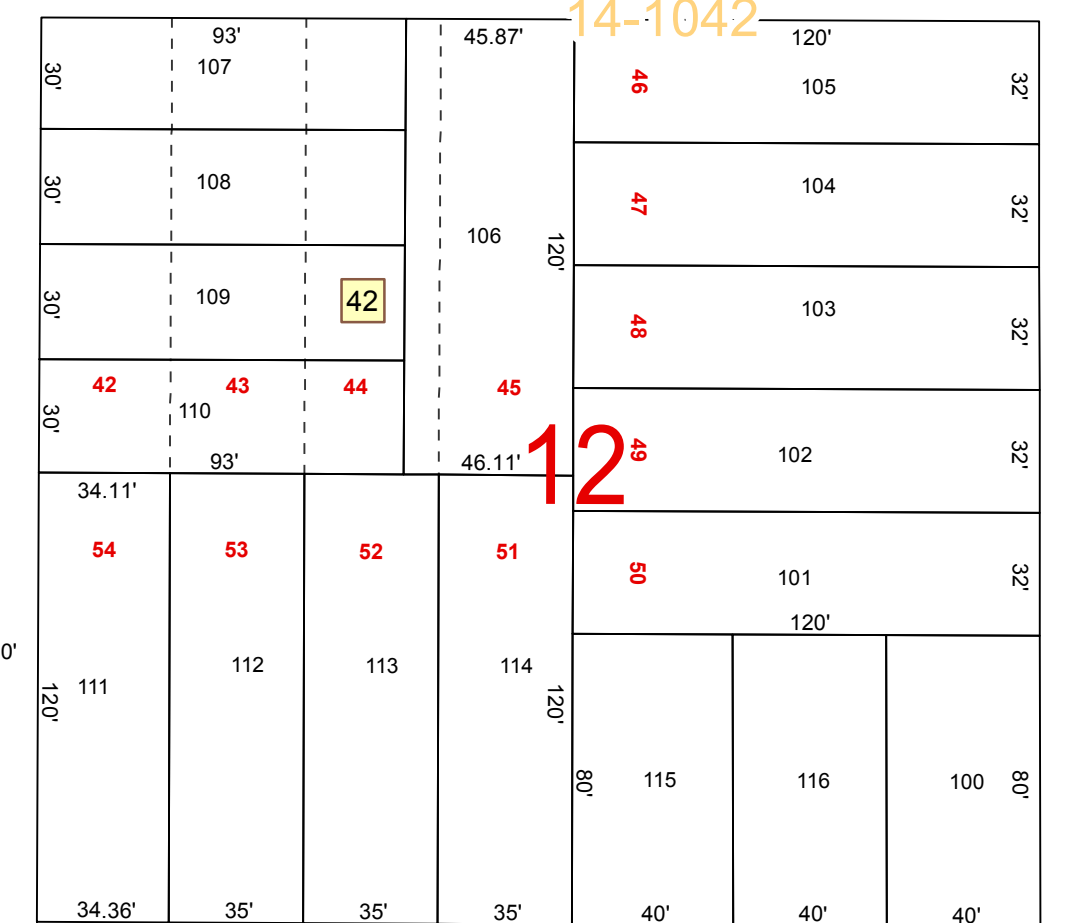
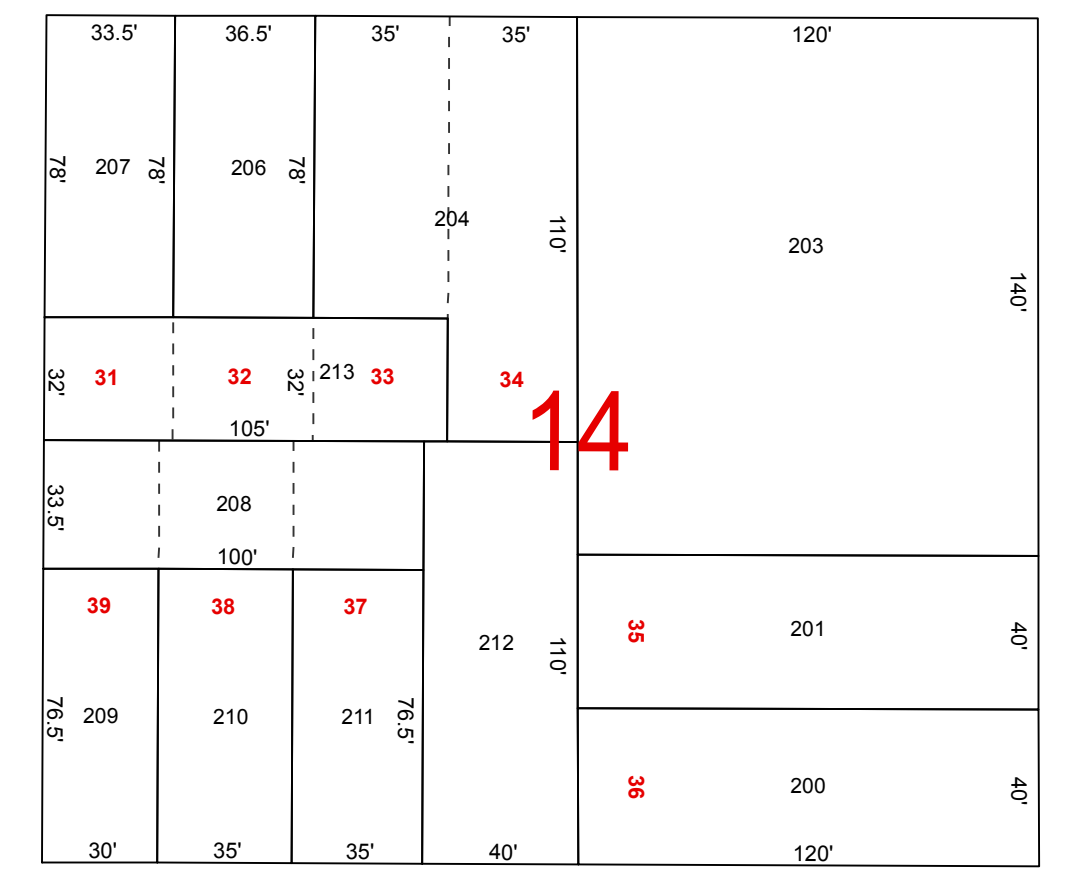
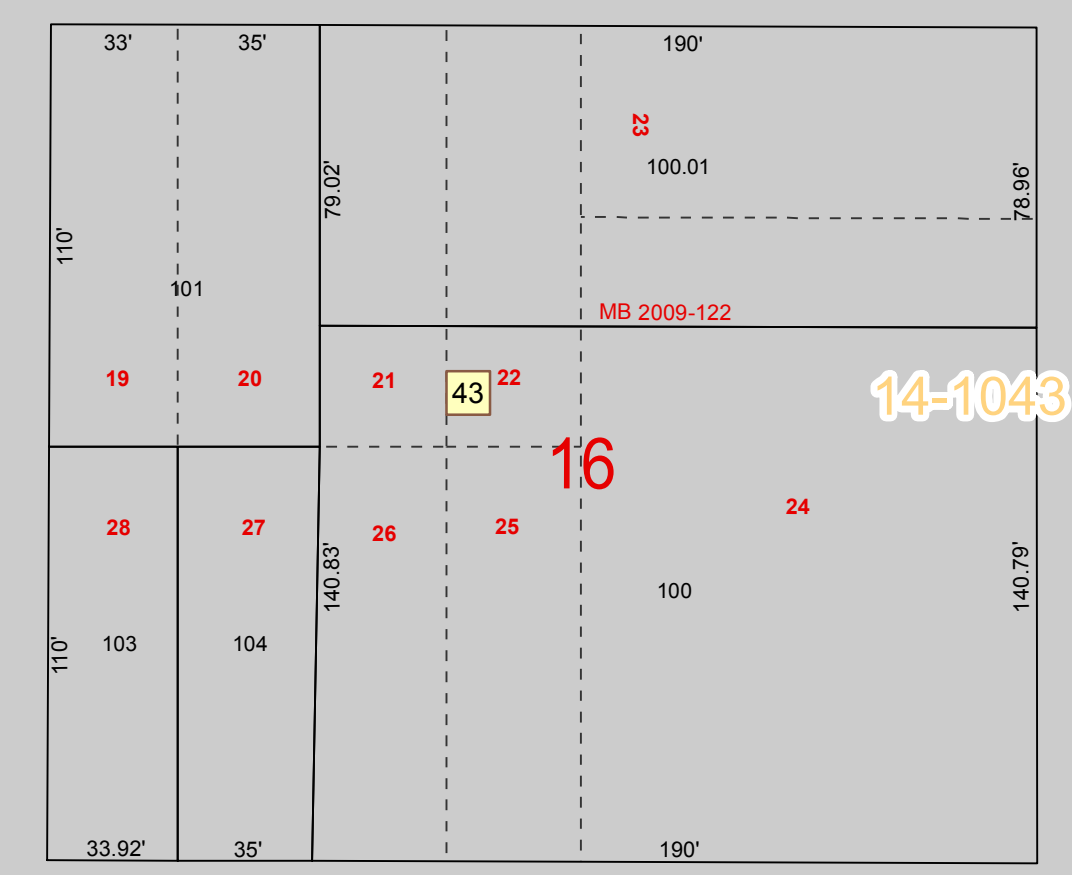
BLOCK 14

37

BLOCK 13

15-2047

E 9TH ST



Erie County, Pennsylvania
CITY OF ERIE Map 14-1042
Bureau of Assessment

IMPORTANT NOTE: Some parcel boundaries are displayed as extending into Lake Erie. By Pennsylvania law all submerged lands lakeward of the ordinary low water mark are lands of the Commonwealth unless specifically conveyed to private ownership through an Act of the General Assembly (Dam Safety and Encroachments Act, Section 15(e), 32 P.S. § 693.12, Act of November 26, 1978 (P.L. 1375, No. 325), as amended). Private property along the shoreline of Lake Erie ends at the Low Water Datum elevation of 569.2 ft. above sea-level (International Great Lakes Datum 1985). Parcel lines shown as extending beyond (lakeward) the low water datum do not infer title or ownership over those submerged lands. The only way to properly determine the lakeward boundary of a shoreline property is by site-specific survey.

FOR TAX PURPOSES ONLY
Scale: 1" = 50'
Plot Date: Thursday, October 10, 2019

☐ Tax Map Page Index
☐ Tax Parcels
— Stream Centerlines
☐ Tracts
1:01 Parcel Number & Acreage

— Road Centerlines
— Original Lines
— Political Boundary Lines
☐ Water Bodies
337 Tract Number

— Railroad Centerlines
☐ Easements
33-183 District & Map Number
☐ Block Number
16 Historic Lot Number

14-1042