

OL 301

16-3049

VAC ORD NO 96-1979  
SEE PCL 3049-104

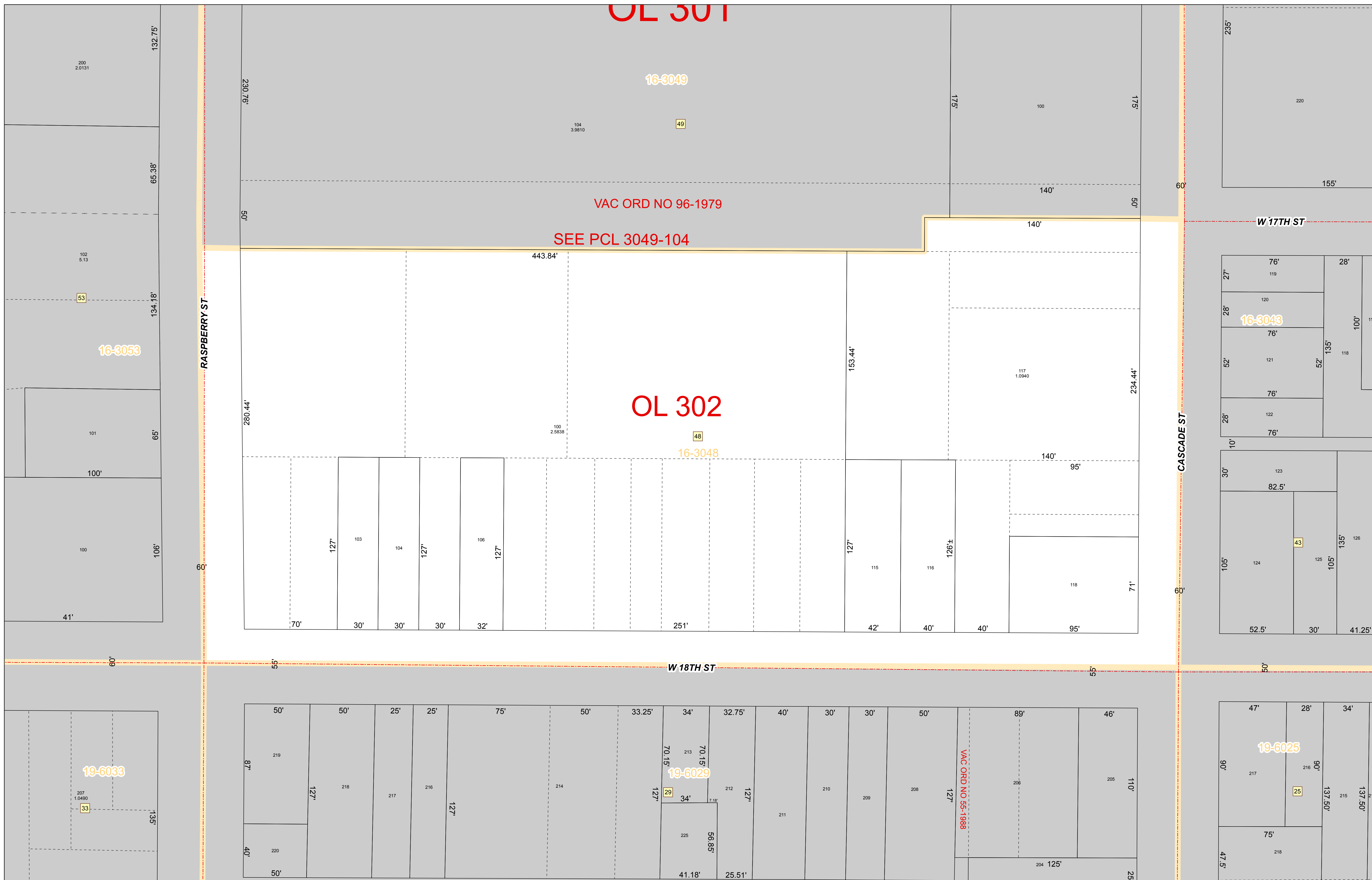
OL 302

16-3048

16-3043

19-6029

19-6025



Bureau of Assessment  
Room 104  
Erie County Courthouse  
140 West 6th Street  
Erie, Pennsylvania 16501  
814-451-6225

Erie County, Pennsylvania  
CITY OF ERIE Map 16-3048  
Bureau of Assessment

**IMPORTANT NOTE:** Some parcel boundaries are displayed as extending into Lake Erie. By Pennsylvania law all submerged lands lakeward of the ordinary low water mark are lands of the Commonwealth unless specifically conveyed to private ownership through an Act of the General Assembly (Dam Safety and Encroachments Act, Section 15(e), 32 P.S. § 693.15, Act of November 26, 1978 (P.L. 1375, No. 325), as amended). Private property along the shoreline of Lake Erie ends at the Low Water Datum elevation of 569.2 ft. above sea-level (International Great Lakes Datum 1985). Parcel lines shown as extending beyond (lakeward) the low water datum do not infer title or ownership over those submerged lands. The only way to properly determine the lakeward boundary of a shoreline property is by site-specific survey.

**FOR TAX PURPOSES ONLY**  
Scale: 1" = 30'  
Plot Date: Tuesday, September 28, 2021

Tax Map Page Index	Tax Parcels	Stream Centerlines	Tracts	1.01 Parcel Number & Acreage
Road Centerlines	Original Lines	Political Boundary Lines	Water Bodies	55.4100 Tract Number
Railroad Centerlines	Easements	33-183 District & Map Number	16 Block Number	16 Historic Lot Number



**16-3048**