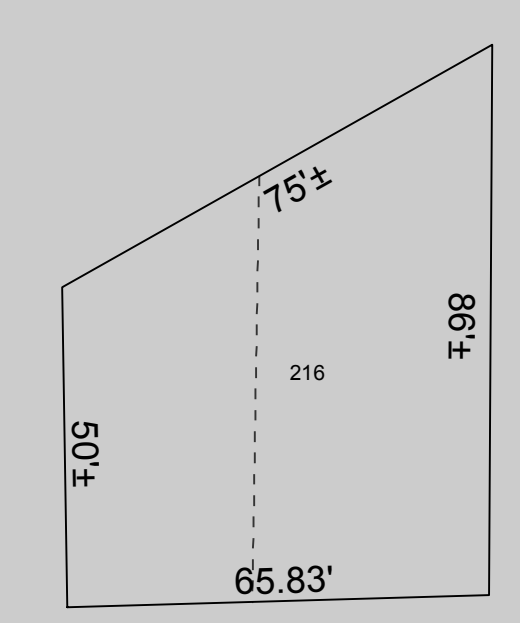


16-3104

16-3106

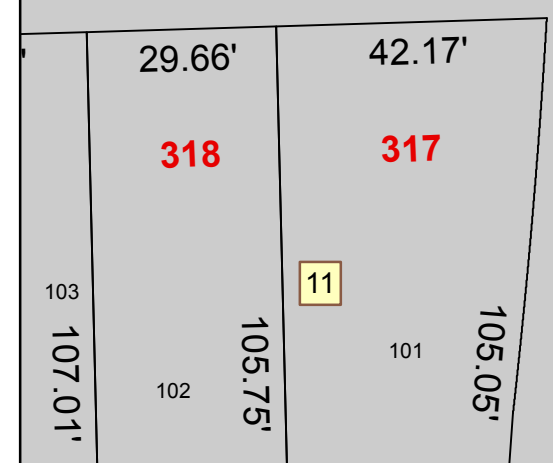
W 12TH ST

RAMP

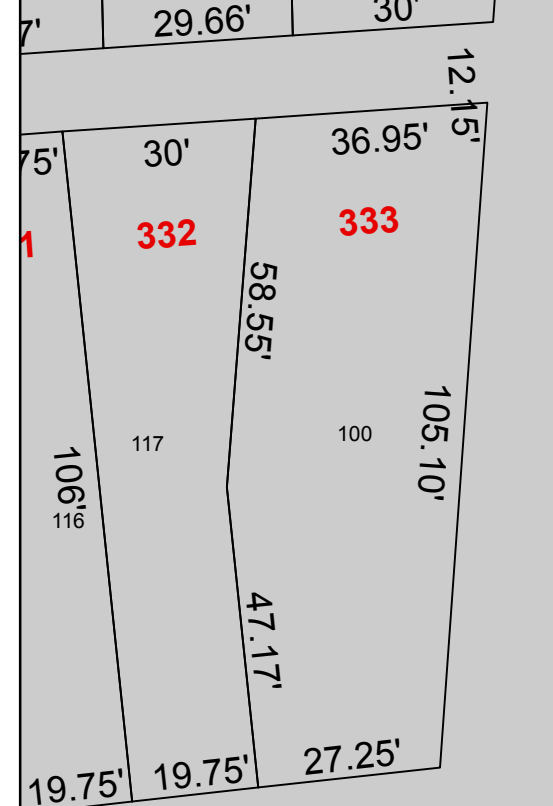


16-3111

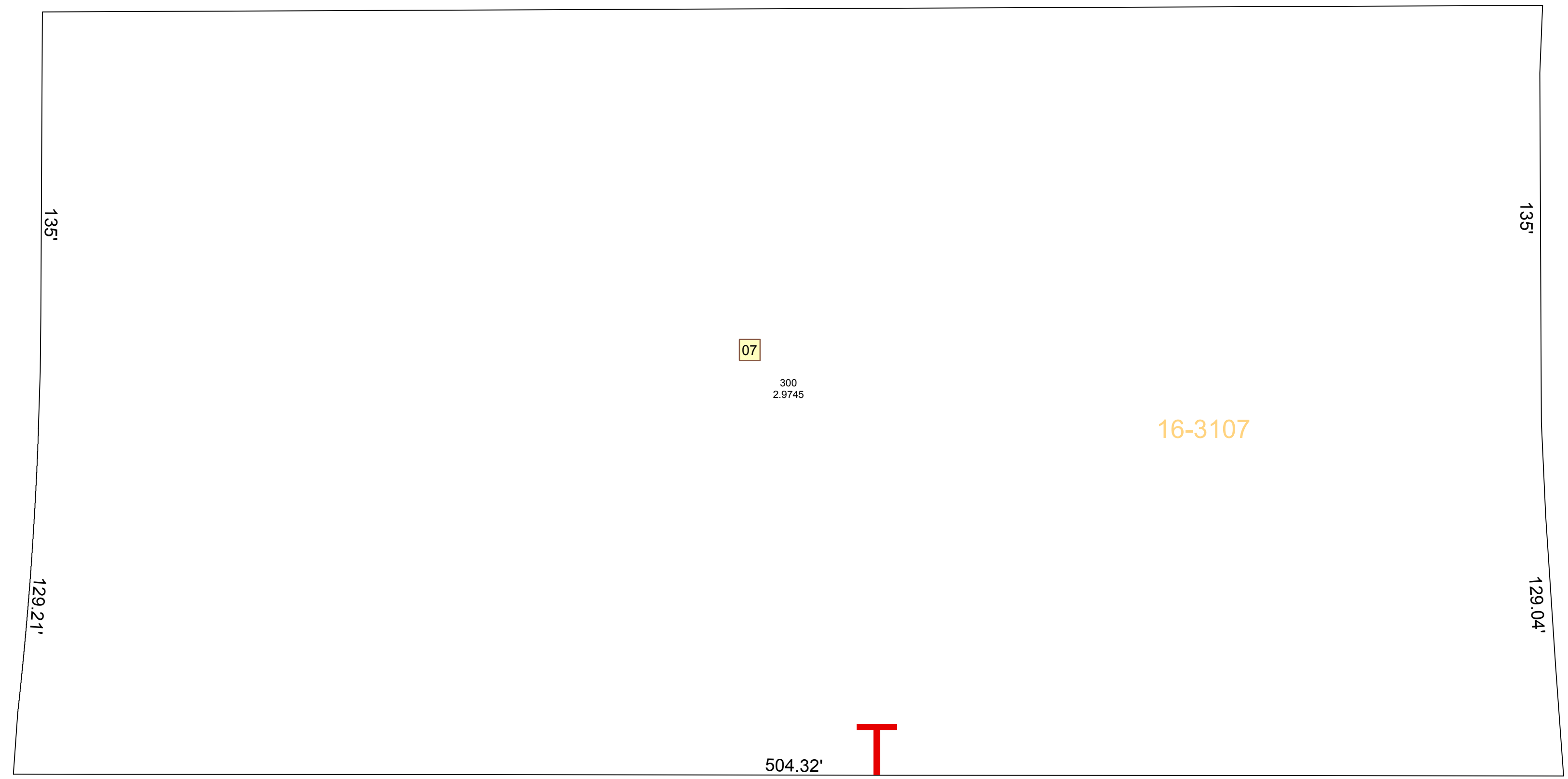
W 13TH ST



B 2-320 & 321



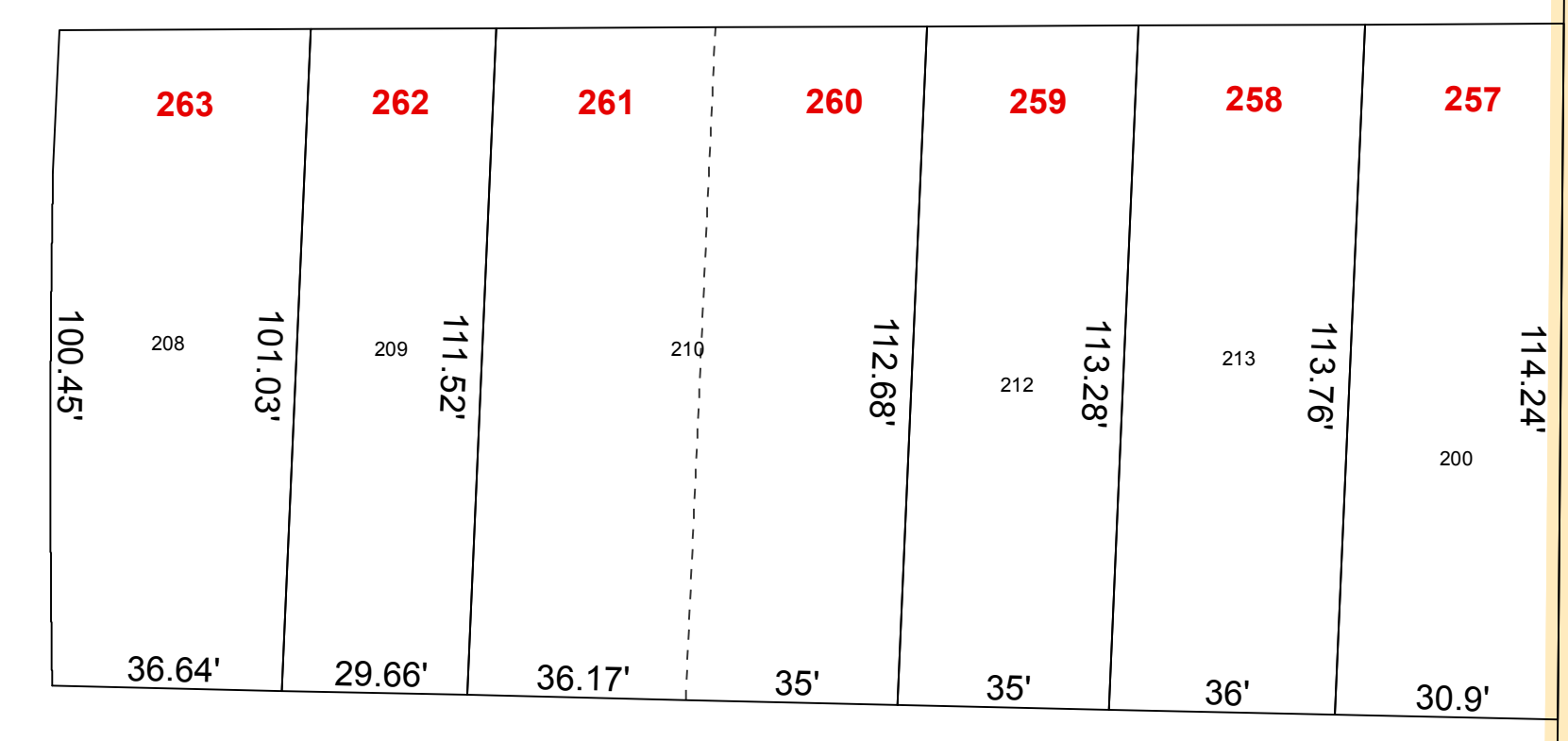
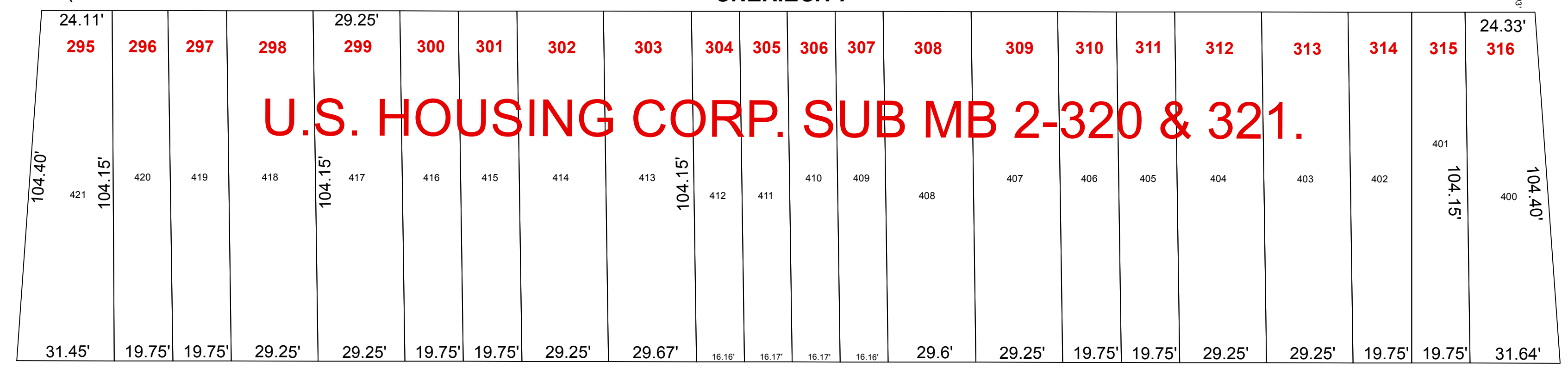
16-3112



16-3107

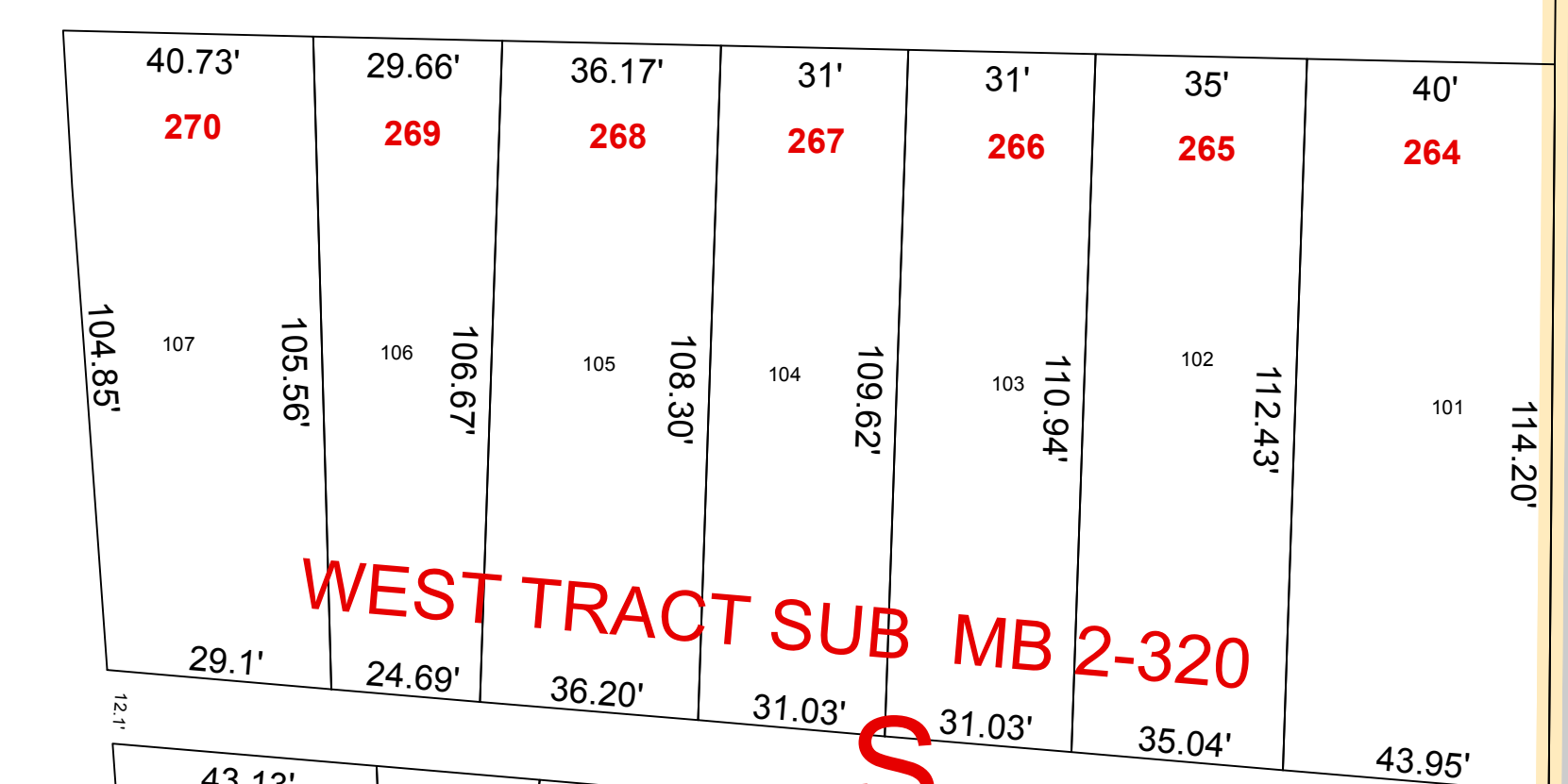
UNERICITY

U.S. HOUSING CORP. SUB MB 2-320 & 321.

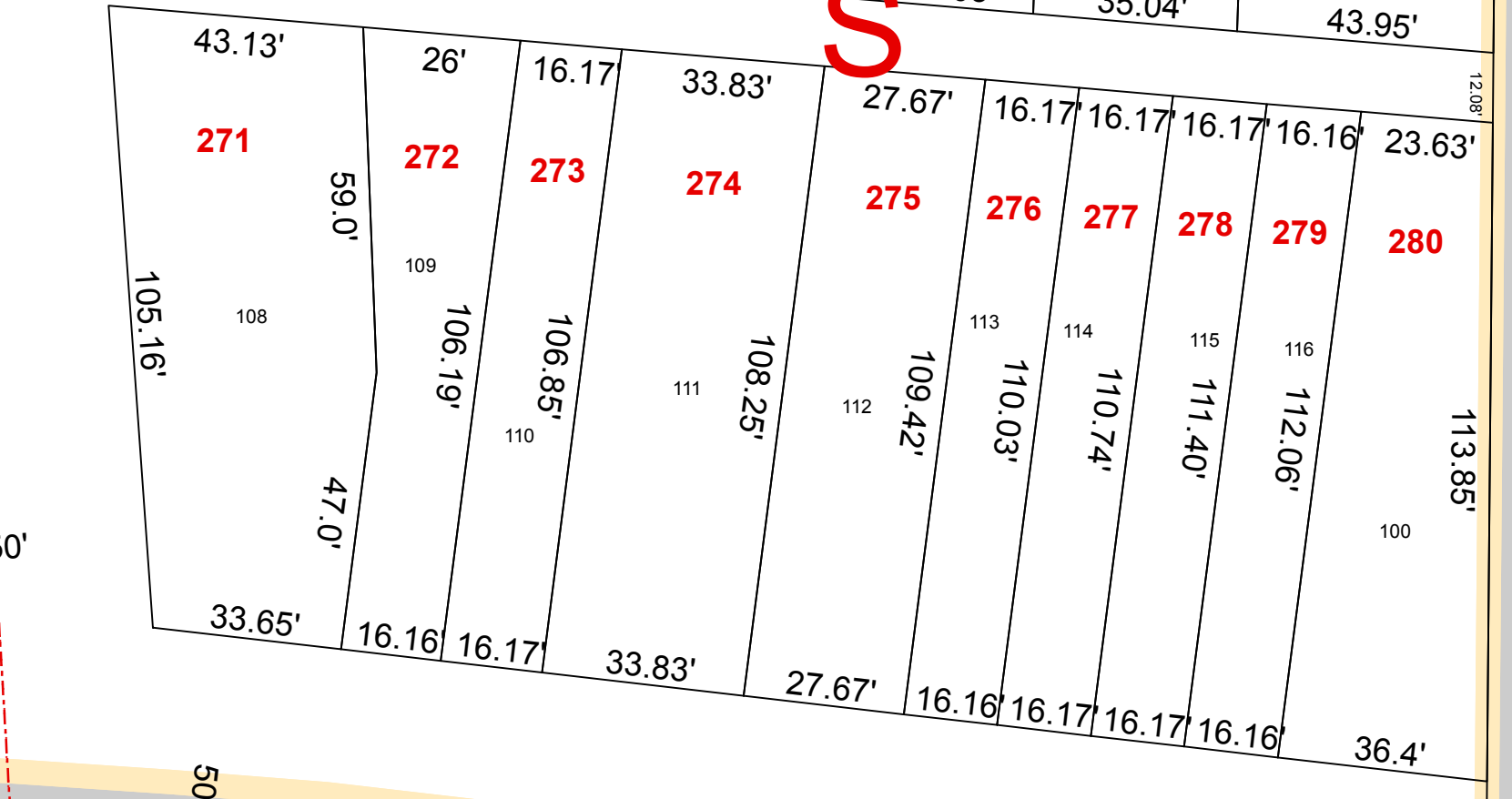


W 13TH ST

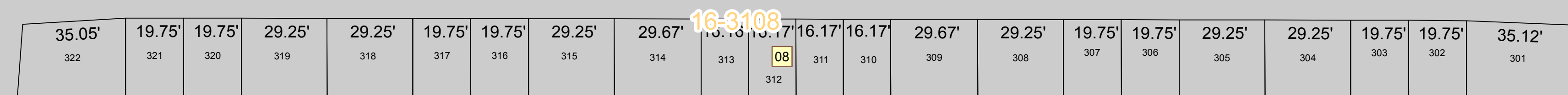
16-3133



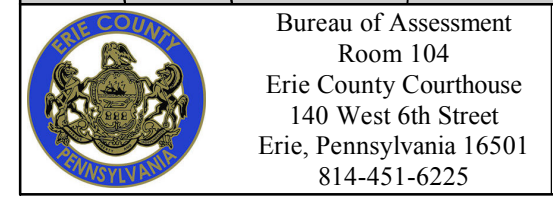
WEST TRACT SUB MB 2-320



W 14TH ST



16-3108



Erie County, Pennsylvania  
 CITY OF ERIE Map 16-3107  
 Bureau of Assessment

IMPORTANT NOTE: Some parcel boundaries are displayed as extending into Lake Erie. By Pennsylvania law all submerged lands lakeward of the ordinary low water mark are lands of the Commonwealth unless specifically conveyed to private ownership through an Act of the General Assembly (Dam Safety and Encroachments Act, Section 15(e), 32 P.S. § 693.12, Act of November 26, 1978 (P.L. 1375, No. 325), as amended). Private property along the shoreline of Lake Erie ends at the Low Water Datum elevation of 569.2 ft. above sea-level (International Great Lakes Datum 1985). Parcel lines shown as extending beyond (lakeward) the low water datum do not infer title or ownership over those submerged lands. The only way to properly determine the lakeward boundary of a shoreline property is by site-specific survey.

FOR TAX PURPOSES ONLY  
 Scale: 1" = 30'  
 Plot Date: Monday, October 14, 2019

- Tax Map Page Index
- Tax Parcels
- Stream Centerlines
- Tracts
- Road Centerlines
- Original Lines
- Political Boundary Lines
- Water Bodies
- Railroad Centerlines
- Easements
- 33-183 District & Map Number
- 16 Block Number
- 1.01 Parcel Number & Acreage
- 55.4100 Tract Number
- 337 Historic Lot Number

16-3107