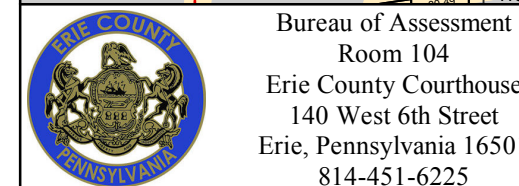
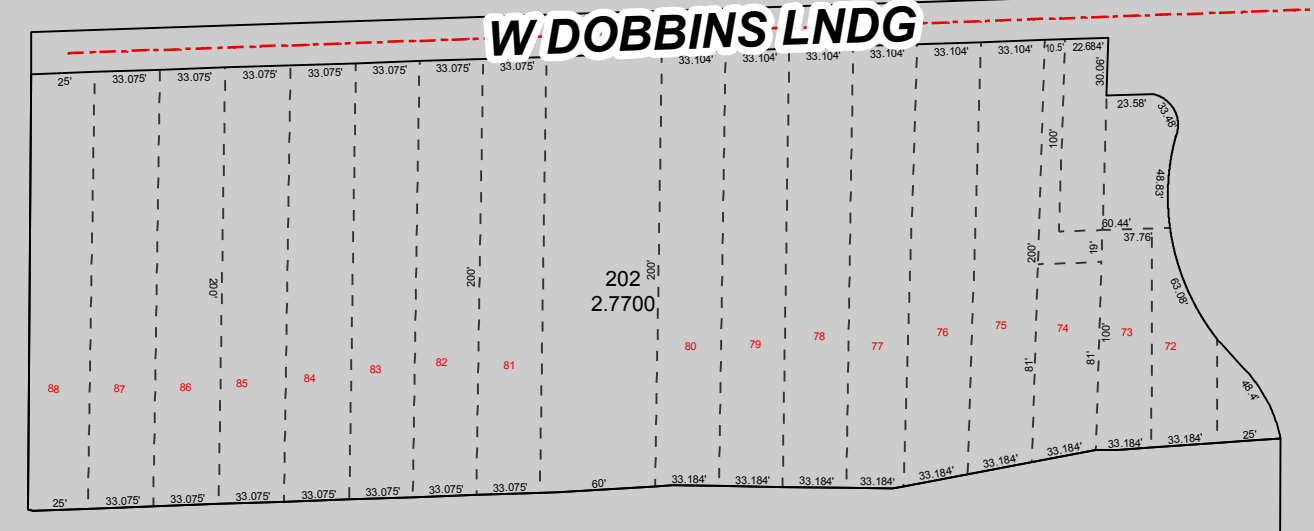
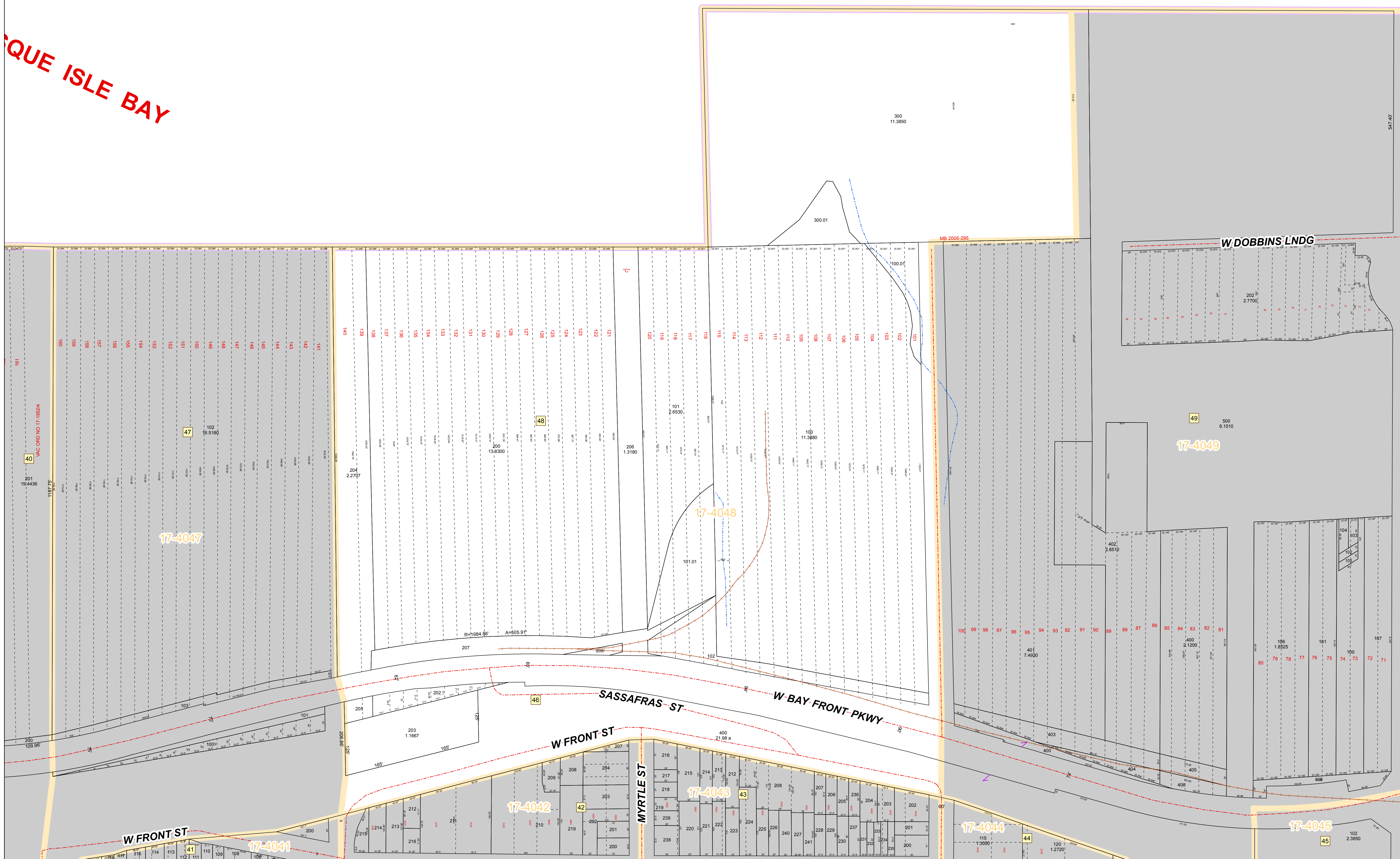


LAKE ISLE BAY



Bureau of Assessment
 Room 104
 Erie County Courthouse
 140 West 6th Street
 Erie, Pennsylvania 16501
 814-451-6225

Erie County, Pennsylvania
 CITY OF ERIE Map 17-4048
 Bureau of Assessment

IMPORTANT NOTE: Some parcel boundaries are displayed as extending into Lake Erie. By Pennsylvania law all submerged lands lakeward of the ordinary low water mark are lands of the Commonwealth unless specifically conveyed to private ownership through an Act of the General Assembly (Dam Safety and Encroachments Act, Section 151(e), 52 P. S. § 693.12, Act of November 26, 1978 (P.L. 1375, No. 325), as amended). Private property along the shoreline of Lake Erie ends at the Low Water Datum elevation of 569.2 ft above sea-level (International Great Lakes Datum 1985). Parcel lines shown as extending beyond (lakeward) the low water datum do not infer title or ownership over those submerged lands. The only way to properly determine the lakeward boundary of a shoreline property is by site-specific survey.

FOR TAX PURPOSES ONLY
 Scale: 1" = 100'
 Plot Date: Monday, October 14, 2019

Tax Map Page Index	Tax Parcels	Stream Centerlines	Tracts	Parcel Number & Acreage
Road Centerlines	Original Lines	Political Boundary Lines	Water Bodies	Tract Number
Railroad Centerlines	Easements	District & Map Number	Block Number	Historic Lot Number

17-4048